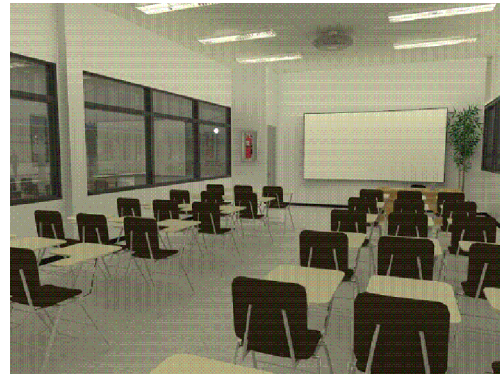


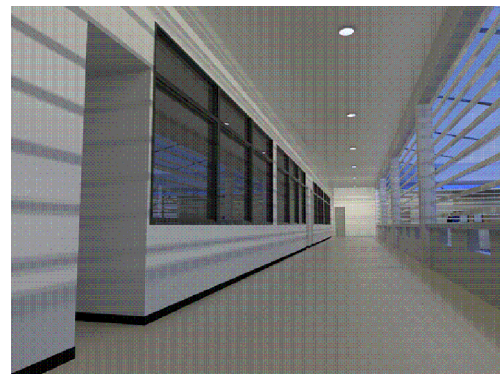


ENTRANCE CANOPY IS NOT YET INCLUDED

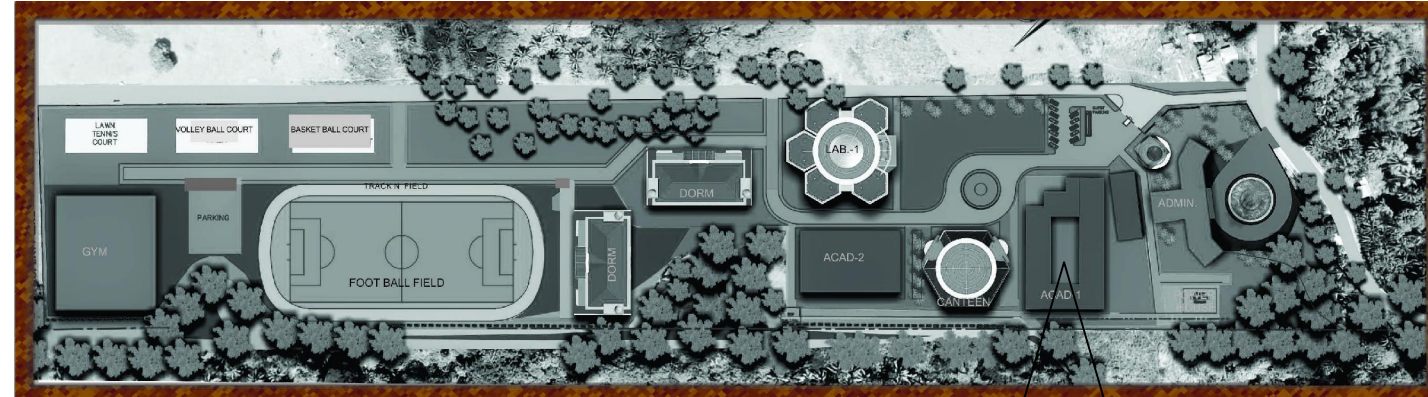
**1 EXTERIOR PERSPECTIVE**  
A-1 NTS



**2 CLASSROOM INTERIOR PERSPECTIVE**  
A-1 NTS



**3 HALLWAY INTERIOR PERSPECTIVE**  
A-1 NTS



**4 PSHS/MRC SITE DEVELOPMENT PLAN**  
A-1 NTS

**GENERAL NOTES:**

PRIOR TO STARTING CONSTRUCTION, THE CONTRACTOR SHALL BE RESPONSIBLE TO MAKE SURE THAT ALL REQUIRED PERMITS AND APPROVALS HAVE BEEN OBTAINED. NO CONSTRUCTION OR FABRICATION SHALL BEGIN UNTIL THE CONTRACTOR HAS RECEIVED AND THOROUGHLY REVIEWED ALL PLANS AND OTHER DOCUMENTS. ALL WORK SHALL BE PERFORMED IN ACCORDANCE WITH THESE DRAWINGS AND SPECIFICATIONS. ALL CONSTRUCTION AND FABRICATION SHALL COMPLY WITH CURRENT BUILDING CODES, ORDINANCES, STATUTES AND ALL OTHER APPLICABLE CODES WHICH GOVERN THE SITE FOR WHICH THESE DRAWINGS PERTAIN. ALL DIMENSIONS AND GRADES SHOWN ON THESE PLANS SHALL BE FIELD-VERIFIED BY THE CONTRACTOR PRIOR TO CONSTRUCTION. THE CONTRACTOR SHALL NOTIFY THE ARCHITECT IF ANY DISCREPANCIES EXIST PRIOR TO PROCEEDING WITH CONSTRUCTION. THE CONTRACTOR SHALL CONTROL THE DUST RESULTING FROM HIS OPERATIONS THROUGH WATERING AND OTHER SUITABLE METHODS ON THE SITE AND HAUL.

THE DRAWINGS AND SPECIFICATIONS ARE INTENDED TO BE FULLY EXPLANATORY AND SUPPLEMENTARY. HOWEVER, SHOULD ANYTHING BE SHOWN, INDICATED, OR SPECIFIED ON ONE AND NOT THE OTHER.

IF EITHER THE DRAWING AND THE SPECIFICATION OR ANY PARTICULAR SPECIFICATION, AND THE GENERAL CONDITIONS CONTRADICT EACH OTHER IN ANY POINT, OR REQUIRE CLARIFICATIONS, THE CONTRACTOR MUST CALL THE SAME TO THE ATTENTION OF ARCHITECT, AND HIS DECISION SHALL BE OBTAINED PRIOR TO THE SUBMISSION OF BIDS. OTHERWISE, THE ARCHITECT'S INTERPRETATION WILL GOVERN THE PERFORMANCE OF THE WORK, AND NO ALLOWANCE SHALL BE MADE.

IF ANY ERROR OR ITS INCONSISTENCY APPEAR IN THE DRAWINGS OR SPECIFICATION, THE CONTRACTOR, BEFORE PROCEEDING WITH THE WORK, MUST CLEARLY BRING TO THE ATTENTION OF THE ARCHITECT FOR PROPER ADJUSTMENT AND IN NO CASE PROCEED WITH THE WORK IN UNCERTAINTY, NOR WITH INSUFFICIENT DRAWINGS. THE CONTRACTOR SHALL FOLLOW SIZES AND SPECIFICATION OR FIGURES ON DRAWINGS IN PREFERENCE TO SCALED MEASUREMENTS, AND TO FOLLOW DETAILED DRAWINGS IN PREFERENCE TO GENERAL DRAWINGS AND FOLLOW ACTUAL FIELD CONDITIONS. THE MILLWORK/JOINERY CONTRACTOR SHALL INVESTIGATE, VERIFY AND BE RESPONSIBLE FOR ALL CONDITIONS AND DIMENSIONS OF FIXTURES AND SHALL NOTIFY THE ARCHITECT ABOUT ANY CONDITION ARISING FROM THIS INVESTIGATION THAT REQUIRES MODIFICATION OR CHANGE BEFORE.

ALL DIMENSIONS ARE MEASURED TO GRID LINE, FACE OF MASONRY OR FACE FINISHED WALL UNLESS OTHERWISE NOTED. ALL WRITTEN DIMENSIONS SHALL HAVE PRECEDENCE OVER SCALING OF THE DRAWINGS. DRAWINGS SHOULD NOT BE SCALED; IF MORE DIMENSIONS ARE REQUIRED, NOTIFY THE ARCHITECT IMMEDIATELY. ALL DIMENSIONS SHALL BE VERIFIED ON SITE AND THE ARCHITECT BE NOTIFIED OF ANY ERRORS OR DIMENSIONS REQUIRING CORRECTION BEFORE PROCEEDING WITH WORK. THE GENERAL CONTRACTOR SHALL BE RESPONSIBLE FOR PROVIDING ALL NECESSARY BLOCKING, BACKING, FRAMING, HANGERS OR ANY OTHER SUPPORTS FOR ALL FIXTURE EQUIPMENT, CABINETS, FURNISHINGS AND ALL ITEMS WHICH REQUIRE THE SAME.

**INDEX OF DRAWINGS**

SHT. NO.	SHEET CONTENTS
<b>ARCHITECTURAL</b>	
A-1	EXTERIOR PERSPECTIVE INTERIOR PERSPECTIVE VICINITY MAP
A-2	MASTER SITE DEVELOPMENT PLAN
A-3	GROUND FLOOR PLAN
A-4	SECOND FLOOR PLAN
A-5	ROOF PLAN
A-6	REFLECTED CEILING PLAN (RF)
A-7	REFLECTED CEILING PLAN (RF)
A-8	FRONT ELEVATION
A-9	RIGHT-SIDE ELEVATION
A-10	LEFT SIDE ELEVATION
A-11	REAR ELEVATION
A-12	CROSS SECTION THRU-A LONGITUDINAL SECTION THRU-B
A-13	SCHEDULES OF DOORS & WINDOWS
A-14	TOILET DETAILS
A-15	HALLWAY GRILL DETAILS STAIR & RAMP DETAILS LOUVER DETAILS
<b>STRUCTURAL</b>	
S-1	CONSTRUCTION NOTES
S-2	FOUNDATION PLAN
S-3	SECOND FLOOR FRAMING PLAN
S-4	ROOF FRAMING PLAN
S-5	TYPICAL SUSPENDED SLAB DETAIL TYPICAL STAIR DETAIL TYPICAL FOOTING DETAIL TYPICAL EXTERIOR WALL DETAIL TYPICAL INTERIOR WALL DETAIL TYPICAL COLUMN DETAIL TYPICAL WALL FOOTING DETAIL TYPICAL WALL DETAIL TYPICAL DETAIL OF BEAMS & GIRDER TYPICAL DETAIL OF BEAMS & GIRDER
S-6	SCHEDULES OF BEAMS & GIRDER
S-7	SCHEMATIC RAFTER DIAGRAM
S-8	CANOPY ISOMETRIC DETAIL
<b>PLUMBING</b>	
P-1	GENERAL NOTES
P-2	SANITARY LINE LAYOUT (SF)
P-3	WATER LINE LAYOUT (WF)
P-4	WATER LINE LAYOUT (WF)
P-5	WATER LINE LAYOUT (WF)
P-6	WATER LINE LAYOUT (WF)
P-7	STORAGE & DRAINAGE LINE LAYOUT (SD)
P-8	STORAGE & DRAINAGE LINE LAYOUT (SD)
P-9	STORAGE & DRAINAGE LINE LAYOUT (SD)
P-10	ISOMETRIC (WATER LINE) ISOMETRIC (SANITARY LINE) ISOMETRIC (STORM & DRAINAGE LINE)
<b>ELECTRICAL</b>	
E-1	GENERAL NOTES POWER RESER. DIAGRAM TELEPHONE RESER. DIAGRAM VICINITY MAP
E-2	LIGHTING LAYOUT (LF)
E-3	LIGHTING LAYOUT (LF)
E-4	POWER & ASSEMBLY LAYOUT (PF)
E-5	POWER & ASSEMBLY LAYOUT (PF)
E-6	SCHEDULE OF LOADS
<b>MECHANICAL</b>	
M-1	GENERAL NOTES EQUIPMENT SCHEDULE FCU ISOMETRIC LAYOUT TYP. ACQU. DEFLECTOR LAYOUT FCU DRAIN CONNECTION DETAIL FCU DRAIN CONNECTION DETAIL EXHAUST FAN INSTALLATION DETAIL
M-2	VENTILATION LAYOUT (VF)
M-3	VENTILATION LAYOUT (VF)
<b>FIRE PROTECTION</b>	
FP-1	FIRE HOSE CABINET DETAIL PIPE SLEEVE DETAIL INSPECTOR TEST CONNECTION DETAIL PLUMBING CONNECTION DETAIL PIPE HANGER DETAIL PIPE BRACKET & BRACES DETAIL
FP-2	FIRE PROTECTION LAYOUT (FP)
FP-3	FIRE PROTECTION LAYOUT (FP)

Republic of the Philippines Department of Public Works & Highways OFFICE OF THE BUILDING OFFICIAL	
Municipality of Odiongan, Romblon	
LAND USE AND ZONING	
LINE AND GRADE	
ARCHITECTURAL	
STRUCTURAL	
SANITARY	
ELECTRICAL	
MECHANICAL	

SITE

<b>OWNER:</b> REPUBLIC OF THE PHILIPPINES DEPARTMENT OF SCIENCE AND TECHNOLOGY PHILIPPINE SCIENCE HIGH SCHOOL MIMAROPA REGION CAMPUS BRGY. RIZAL, ODIONGAN, ROMBLON	<b>PROJECT TITLE:</b> CONSTRUCTION OF ACADEMIC BUILDING 1	<b>PREPARED BY:</b> JOLITO G. TAN RESIDENT ARCHITECT	<b>APPROVED BY:</b> EDWARD C. ALBARACIN CAMPUS DIRECTOR	<b>SHEET CONTENTS:</b> AS SHOWN	<b>SHEET NO.:</b> A 1   9
--	---	--	---	------------------------------------	---------------------------------